

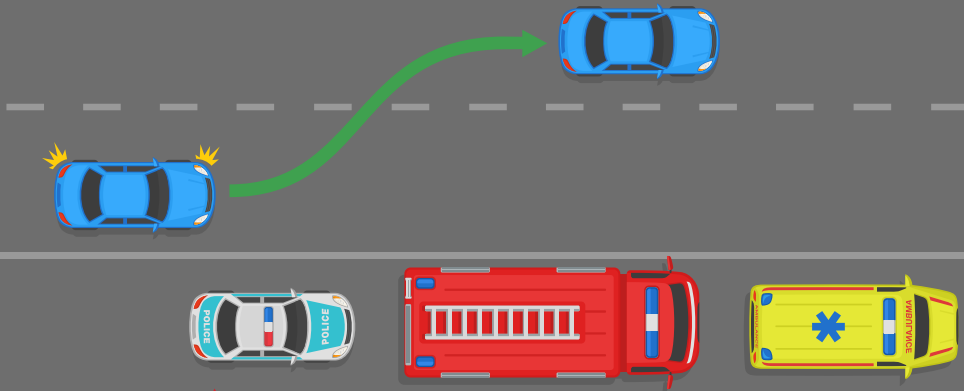


New Changes to Roadside Worker Safety Rules - Effective September 1, 2023



MOVE OVER

OR SLOW DOWN FOR STOPPED EMERGENCY VEHICLES



Drivers must slow down when passing all roadside workers – just like you do now for police, ambulances, fire trucks and tow trucks.

When you drive in the closest lane to any stopped roadside vehicle with flashing lights, you must move over to the far lane to give workers extra space. If you can't safely move over, you must slow to at least 60 km/h, or the posted speed limit (whichever is lower).

New Fines

Drivers who fail to comply with the new safety rules could receive a \$243 fine and 3 demerits. These fines apply when any stopped roadside vehicle with flashing lights activated are present.

Passing Snowplows

Drivers must not pass a snowplow when:

- the view along the side of the snowplow is obstructed.
- passing would impede the operation of the snowplow.
- the act of passing cannot be done safely.

Drivers who fail to comply with any of these actions could receive a \$324 fine and 3 demerits.



Your Guide To Powerline Safety & Farming

Here are tips how to stay safe around powerlines and poles

Check the height of your new equipment

If you're buying it new, confirm the height, update your GPS with any changes and consider your route to ensure you can cross safely under power lines.

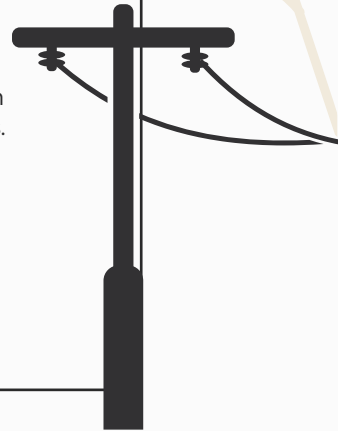
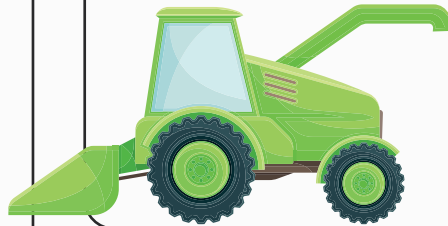
If the height of your load is more than **4.15 meters**, it's considered "over height" and you'll need to get a permit from **Alberta Transportation**.

If the height of your load is more than **4.15 meters**, give us a call! We'll help plan the safest and most efficient route.

If needed, we'll escort the move and lift or move the power lines.

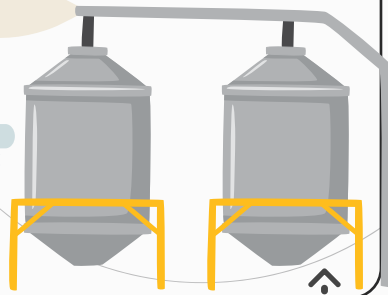
Stay 7 meters away from power lines

Keep this in mind when operating equipment like grain augers and air seeders, or when lifting truck boxes or back hoes.



Stack & store wisely

Whether it's a grain bin or bale storage, stack and store it at least **7 meters** away from power lines.



Plan before moving tall equipment

Map your route and locate any overhead power lines. If you don't know whether it's safe to cross under or work next to power poles and lines, call BRPC for help: **1.877.428.3972**



Call before you dig!

Before digging or driving posts into the ground, talk to **Utility Safety Partners** to request an underground locate. Utilities are closer to the surface of the ground than you think.

Assume downed power lines are energized. Stay at least **10 meters** away and warn others of the danger. Call **911** or BRPC's 24-hour toll-free line: **1.877.428.3972**.



New MVP Business



Battle River Power Coop is proud to support local businesses through our Member Value Program (MVP)!

This month's MVP business spotlight is BeauVilla Flowers & Gifts in Beaumont.

BeauVilla Flowers & Gifts offers 10% off regular prices on flowers and giftware to members who show their MVP Card.

Visit them today and make sure to mention you are a member of Battle River Power Coop!

Thank you to all the businesses who have offered savings to our members! Keep an eye on our website under Community as we continue to add businesses as they join.

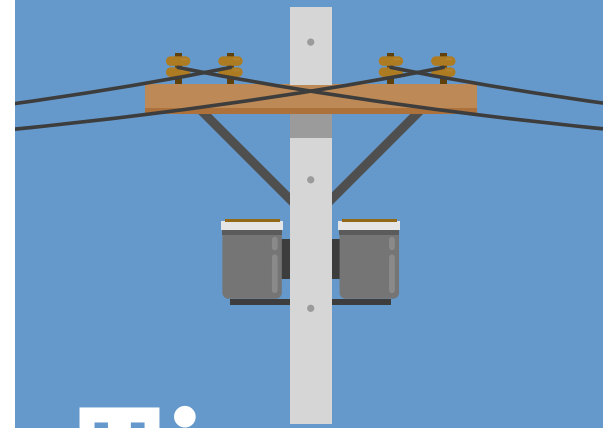
Meal to the Field

Thank You to everyone who submitted entry forms for our 2023 Meal to the Field Contest!

In honour of the hard work that takes place during the harvest season, Battle River Power Coop's "Meal to the Field" is a special event that allows members to participate in a contest held in late summer, with deliveries taking place during harvest time.

Meal to the Field provides an opportunity for employees, directors, and members to come together, share a meal, and show their appreciation for the vital task at hand – the annual harvest.

Good luck to those who have entered and keep an eye on our Facebook and Instagram for the draw!



Tips from the Line

Harvest Time Is Here!

Make sure to check the height of your equipment to ensure you can cross safely under power lines.

If the height of your load is more than 4.15 meters, it's considered "over height" and you'll need to get a permit from Alberta Transportation.

If the height of your load is more than 4.15 meters, give us a call at 1.877.428.3972. We'll help plan the safest and most efficient route.

Message from the Board of Directors

The Board of Directors at Battle River Power Coop is undertaking comprehensive Board Governance training aimed at enhancing their leadership skills and aligning their practices with the cooperative's principles and objectives. The training, consists of a legal accountabilities and responsibilities, focused on various critical aspects of cooperative governance, ensuring that the directors are well-equipped to make informed decisions for the organization.

Governance training upholds the fifth cooperative principle, "Education, Training, and Information," because it directly contributes to the empowerment and informed participation of cooperative members, elected representatives, managers, and employees. This principle emphasizes the importance of providing educational opportunities, training, and access to relevant information so that Directors can effectively contribute to its development and success.

Looking ahead, Battle River Power Coop's Directors are poised to engage in further educational initiatives. Their upcoming training with the Alberta Federation of Rural Electrification Associations (AFREA) will continue to enrich their understanding of cooperative governance. This training will bolster their capacity to steer the cooperative in the right direction, making decisions that align with both their cooperative values and the ever-evolving energy industry and regulatory landscape.

Ultimately, Battle River Power Coop's commitment to ongoing education and training underscores their dedication to not only maintaining a robust Board of Directors but also to nurturing a knowledgeable and engaged cooperative community. Through these efforts, they are poised to contribute meaningfully to the sustainable development of their organization and the communities they serve.

REGULATED RATE OPTION



The RRO may increase or decrease from month to month as it is priced on the open market and subject to many factors relating to supply and demand. It is not a 'regulated' rate, rather it is a default rate. If you do not have an energy contract, then you are on the RRO.

For August 2023, the RRO is priced at \$0.29476 per kWh, reflected on your enclosed blue bill. For September 2023, the REA monthly rate as calculated under the RRO regulation is \$0.23884. Detailed information on the monthly RRO is available on: www.brpower.coop.

Stay Up to Date with Battle River Power Coop

If you have had any changes to phone numbers, email addresses, mailing address or wish to add other contact details to your account, please connect with us toll-free at 1.877.428.3972 or email: brpc@brpower.coop and we will ensure your account is updated.

Other ways you can stay in the loop with Battle River Power Coop:

- **Visit our website www.brpower.coop.** The website offers on-line account access for members to review their accounts.
- Battle River Power Coop also communicates on popular social media platforms – **Facebook, Instagram, Twitter, and YouTube.**
- **Download our Outage App** from the Google Play or Apple Store. Our Outage App is updated with the most current information on outages in our service area.

Want to help others learn about our Cooperative?

Scan the QR Code with your phone's camera, click on the link, and leave us a review!



Members are free to purchase natural gas services or electricity services from a retailer of their choice. For a list of retailers, visit ucahelps.alberta.ca or call 310-4822 (toll free in Alberta). Code of Conduct Regulation: Advertising Section 7(1).

BATTLE RIVER POWER COOP IS AVAILABLE FOR POWER TROUBLE CALLS 24/7/365 CALL TOLL-FREE: 1.877.428.3972

