



# Battle River POWER COOP

MEMBER OWNED • COMMUNITY POWERED



## 2023 Annual General Meeting

June 15, 2023

RSVP today to save your  
seat for our upcoming AGM!

Reserve tickets ahead of time  
by phoning 1.877.428.3972 or  
emailing [brpc@brpower.coop](mailto:brpc@brpower.coop).

Tickets for the AGM are \$5.00/  
person.

Early registration will begin at  
3:30 p.m. at the Norsemen Inn  
(6505 48 Avenue, Camrose,  
Alberta)

Banquet commences at 5:00 p.m.

The Annual General Meeting  
begins at 6:00 p.m.



### **Darcy Doblanko**

*Calmar Area*

I look forward to continuing to provide leadership and guidance along with my fellow directors.



### **Darrin Rasmuson**

*Gwynne Area*

My first term has been an amazing experience and, thanks to this experience, I believe that I can be a significant contributor to the cooperatives now and in the future.



### **Arnold Hanson**

*Viking Area*

I hope to continue my role within the executive of your REA Board as we continue to reinforce our Coop's voice and representation in rural electrical delivery.



### **David Thomas**

*Lamont Area*

I should like to serve another term with Battle River Power Coop as it approaches a crossroads in seeking legislative changes to provide financial sustainability.



### **Kevin Mathieu**

*Wetaskiwin Area*

I believe that the board is a well rounded group with people from all over our service area that work as a team and have the best interests of the cooperative at heart. I enjoy being part of the team.

# Ensuring Farm Safety Around Power Poles and Lines During Seeding

With the seeding season upon us, Battle River Power Coop has responded to a number of farming-related incidents and want to remind members about looking up and being aware of where the power poles and lines are located around fields. One crucial aspect of farm safety is being vigilant around power poles and lines that may be present on or near their fields. It is essential to take proactive measures to prevent accidents and protect both lives and property.

To the right are some key considerations to keep in mind regarding farm safety around power poles and lines during seeding:

## Remember

Safety should always be a top priority on the farm. By being proactive, staying informed, and implementing best practices, farmers can reduce the risks associated with power poles and lines during seeding operations. Together, we can create a safer working environment and protect our valuable resources.



**Identify Potential Hazards:** Familiarize yourself and your team with the location of power poles and lines near your fields. Take note of any low-hanging lines or damaged poles that may pose a risk during seeding operations. If you see a broken pole or there are downed lines, do not try and touch the lines to move them. Call 1.877.428.3972. Downed lines have the potential to be live and can be deadly.

**Maintain Safe Distances:** Ensure that all farm machinery and equipment maintain a safe distance from power poles and lines while operating in the fields. This includes seeders, sprayers, tillage equipment, and other vehicles. Keep in mind that equipment such as augers can extend higher than you might expect, so exercise caution.

**Plan Field Layouts Carefully:** When designing field layouts for seeding, consider the presence of power poles and lines. Aim to create wider working areas around them to allow ample clearance for equipment. This pre-planning can help prevent accidental contact or damage.

**Height Restrictions:** Be aware of any height restrictions imposed by power lines. Large machinery or raised equipment may come dangerously close to overhead lines. Make sure operators are aware of these restrictions and take necessary precautions.

**Maintain Communication:** Clearly communicate with your team about the location of power poles and lines, emphasizing the importance of avoiding contact. Provide instructions and reminders regularly, and encourage open communication to report any potential hazards or incidents.

**Be Alert and Vigilant:** While operating machinery, remain alert and watchful for power poles and lines. Keep an eye out for any signs of damaged poles or sagging lines. If you notice any issues, report them promptly to the utility company for assessment and repairs.

**Educate and Train:** Ensure that all farm workers, including seasonal staff, receive proper training on farm safety protocols, including guidelines specific to power poles and lines. Educate them about the risks, precautions, and emergency procedures to follow in case of an incident.

Stay safe and have a successful seeding season!

# New MVP Business



Battle River Power Coop is proud to support local businesses through our Member Value Program (MVP)!

**This month's MVP business spotlight is Coach's Source for Sports in Wetaskiwin.**

With summer here, get all your sports equipment and summer sports needs!

Coach's Source for Sports offers **10% off regular priced merchandise** to members who show their MVP Card.

Visit them today and make sure to mention you are a member of Battle River Power Coop!

Thank you to all the businesses who have offered savings to our members! Keep an eye on our website under Community as we continue to add businesses as they join.

## Temporary Trailer

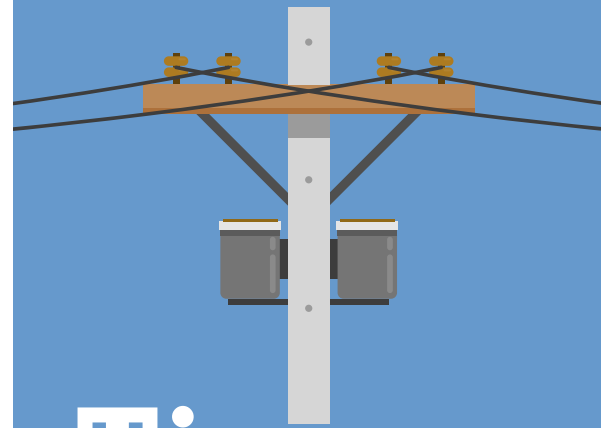
Battle River Power Coop is getting a facelift to the reception area.

There is a temporary trailer setup outside the front entrance to the main building. Starting Monday, May 29, member-owners will use the temporary trailer to pay bills and make inquiries. For the month of construction, we ask that members try to stop by during office hours to drop off any paperwork or payments as the temporary trailer will not have a mail slot to securely keep any after-hours mail. If members cannot make it during office hours, please contact us at 1.877.428.3972 to make arrangements with our office.



## Early Closure Notice

On Friday, June 23, Battle River Power Coop's office will be closing at 4:00 p.m. for a private event. Please make arrangements to visit us before we close. Thank you for your understanding!



# Tips from the Line

Ensure that all farm machinery and equipment maintain a safe distance from power poles and lines while operating in the fields.

This includes seeders, sprayers, tillage equipment, and other vehicles.

Keep in mind that equipment such as augers can extend higher than you might expect, so exercise caution.

## Message from the Board of Directors

We hope this message finds you well and enjoying the benefits of being part of our cooperative community. We are writing to inform you about some important updates to our member terms and conditions, as well as to shed light on the vital role played by our cooperative governance board of directors.

In our commitment to provide the best experience for our members, we have reviewed and updated our member terms and conditions. These updates reflect the evolving needs of our cooperative and ensure clarity, transparency, and fairness in our interactions. We encourage you to take the time to review the revised terms and conditions, which can be found on our website. Should you have any questions or require further clarification, our dedicated support team is always ready to assist you.

As a member-owned cooperative, we operate on the principles of democratic decision-making and collective ownership. To uphold these values, we have a dedicated board of directors responsible for overseeing the cooperative's affairs and representing the interests of our members. Their primary role is to set strategic goals, establish policies, and make key decisions that align with our cooperative's mission and vision.

The board of directors acts as the voice of the membership, ensuring that your needs and concerns are addressed and considered. They work collaboratively with management to monitor the cooperative's financial health, evaluate risks, and make informed decisions that promote

the long-term sustainability of our cooperative. Furthermore, the board ensures accountability and responsible governance.

In addition, the board of directors encourages member engagement and participation in the cooperative's activities. They welcome member input, suggestions, and ideas, as your valuable perspectives play an essential role in shaping the future of our cooperative.

We believe that by updating our member terms and conditions and maintaining a robust cooperative governance structure, we can continue to serve you better and uphold the principles that define us as a cooperative.

Thank you for your continued support and commitment to our cooperative. We look forward to seeing you at our AGM at 5:00pm on Thursday, June 15th at the Norsemen Inn in Camrose.



## REGULATED RATE OPTION



*The RRO may increase or decrease from month to month as it is priced on the open market and subject to many factors relating to supply and demand. It is not a 'regulated' rate, rather it is a default rate. If you do not have an energy contract, then you are on the RRO.*

*For May 2023, the RRO is priced at \$0.13657 per kWh, reflected on your enclosed blue bill. For June 2023, the REA monthly rate as calculated under the RRO regulation is \$0.18689. Detailed information on the monthly RRO is available on: [www.brpower.coop](http://www.brpower.coop).*

**Members are free to purchase natural gas services or electricity services from a retailer of their choice. For a list of retailers, visit [ucahelps.alberta.ca](http://ucahelps.alberta.ca) or call 310-4822 (toll free in Alberta). Code of Conduct Regulation: Advertising Section 7(1).**

**BATTLE RIVER POWER COOP IS AVAILABLE FOR POWER TROUBLE CALLS 24/7/365 CALL TOLL-FREE: 1.877.428.3972**

